



## Double Hungs Exterior Features

- Extruded aluminum clad exterior.
- Traditional butt-joint cladding.
- Traditional putty sticking designed to match putty SDL bars – tighter joints.
- Color matched aluminum jamb liner filler -covers up vinyl jamb liner.
- Frame profile designed to match historical sash stop details.
- Full interlocking check rail made from aluminum – adds strength and keeps out air and water.
- Exterior sash proportions match period windows.





## Double Hungs Interior Features

- Heavy solid wood interiors.
- All interior stop profiles have a clean, squared off profile to give a traditional look.
- Bottom and top rails are clean from any lift routs (optional field applied lifts are available).
- Heavy 3-1/2" bottom rail give the window proper historic proportions.
- Lock rail is clean from any visible tilt latches.
- Symmetry Balance System conceals all balance mechanisms .





**Weather Shield Premium Series™**  
Aluminum Clad Wood Windows & Doors



## Symmetry Balance System... *The Invisible Balance*

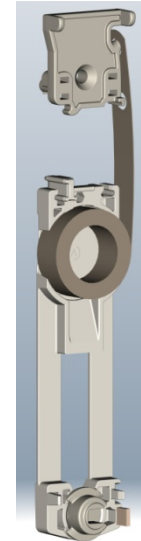


Sash stops are concealed behind the wood balance cover



## Symmetry Balance System

- The most concealed balance system on the market!
  - *No visible weather-strip.*
  - *Balance system concealed.*
  - *Greatly reduced operation noise.*
  - *Upgraded to a Class 3 constant force balance for low operational force.*
- Greatly reduces operation noise.
- Upgraded to a Class 3 Constant Force balance for a low operational force.
- Exposed exterior surfaces are color matched to the exterior color.
- Standard with wood fillers.



Inverted  
Constant Force  
Balance



Stainless Steel  
Coil Spring



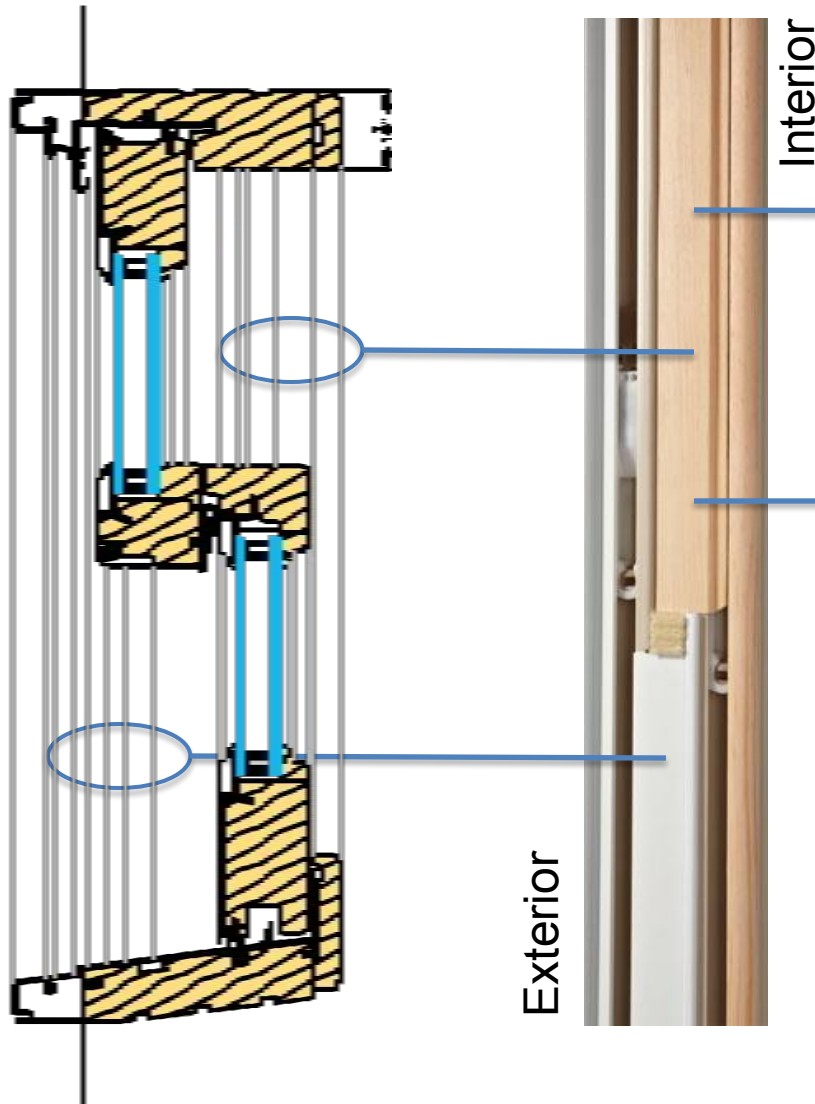




**Weather Shield Premium Series™**  
Aluminum Clad Wood Windows & Doors



## Symmetry Balance System - The Invisible Balance



**Standard Wood Jamb**



**Optional Vinyl Jamb**  
Tan or White



Weather Shield Premium Series™  
Aluminum Clad Wood Windows & Doors



## Symmetry Balance System - New Inverted Constant Force

**Old**

Block & Tackle



Operational Force  
for 30 lbs Sash

**18 lbs**

40% of Sash Weight

**New** Inverted  
Constant Force



Operational Force  
for 30 lbs Sash

**15 lbs**

50% of Sash Weight



Least amount of  
force to open & shut



Quietest operation



One performance  
class stronger



New pivot pin design  
for added strength



## Double Hung Hardware

- Sash lock securely using a recessed, cam-style lock mechanism
- Lock and tilt latches are integrated – both latches can be activated by a single flip of the lock lever
- The lock lever and escutcheon plate can easily be removed for finishing
- All unit widths use only one lock
- Routed sash lifts are no longer available – two styles of optional lifts are available
- Available in 4 popular finishes: White, Tan, Rustic Bronze, Brushed Nickel, Brass



Standard Sash Lock



Integrated Tilt Latches



Contemporary Sash Lift

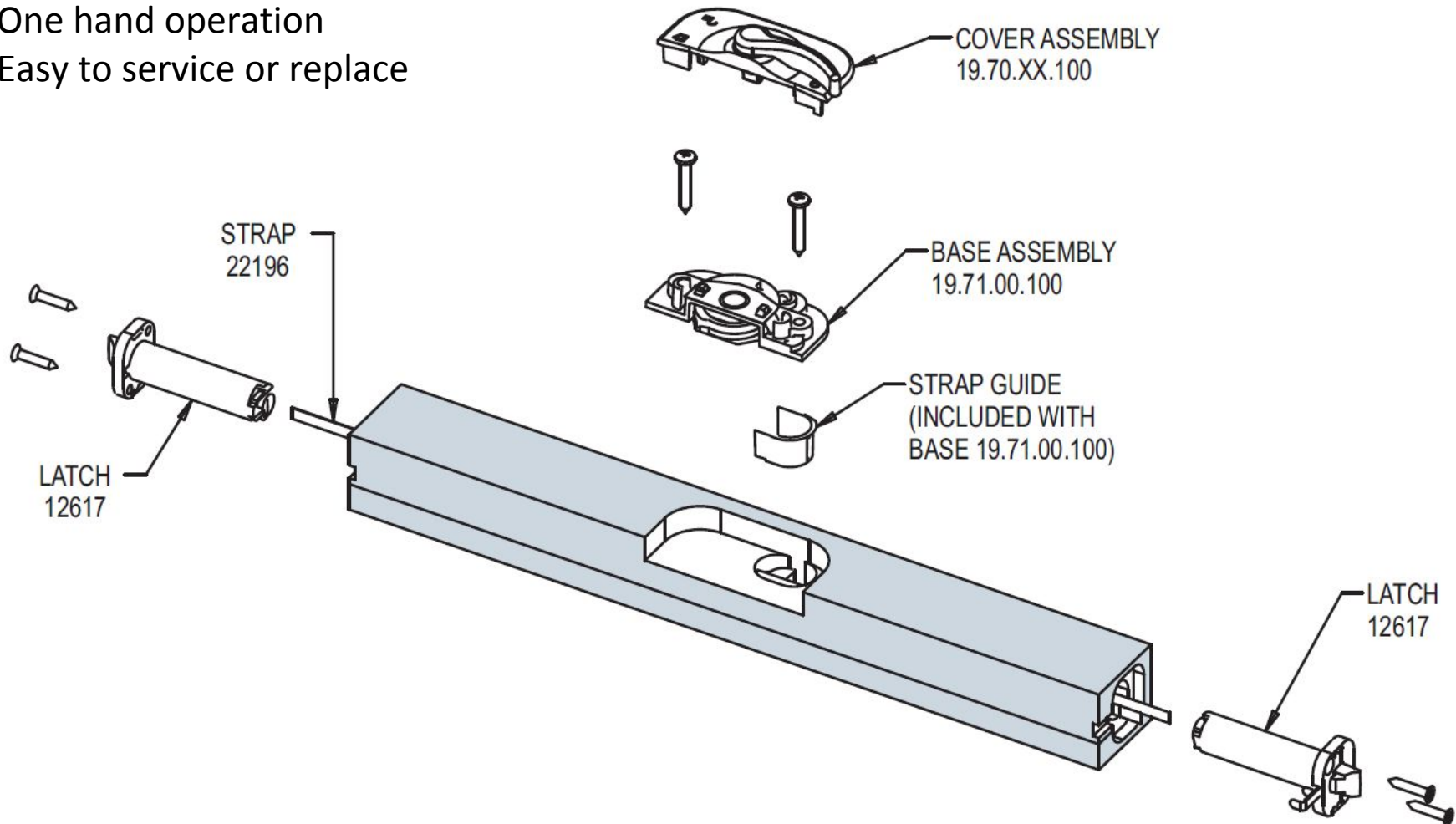


Historical Finger Lift



## Double Hung Integrated Lock / Latch

- Completely concealed tilt latches
- One hand operation
- Easy to service or replace







**Weather Shield Premium Series™**  
Aluminum Clad Wood Windows & Doors



## Double Hung Comparison

