

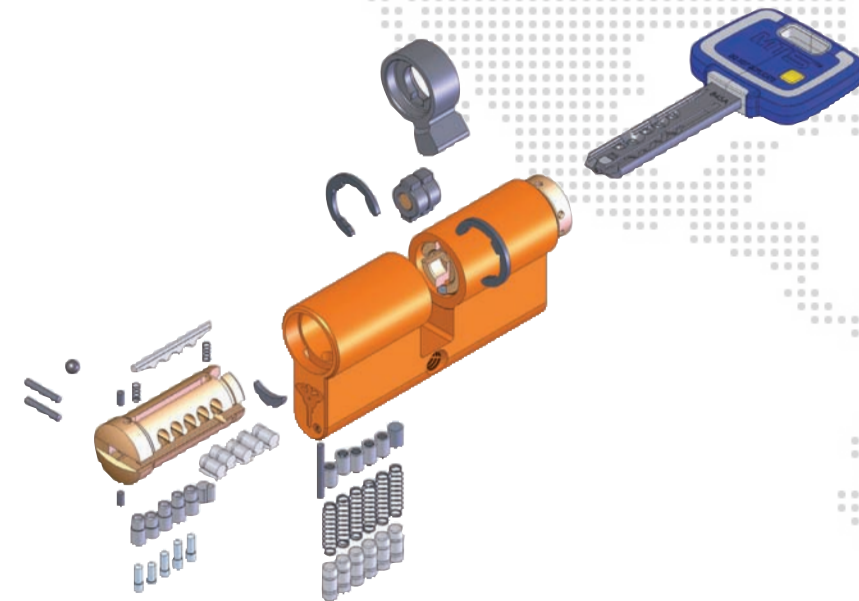
A NEW LEVEL IN HIGH SECURITY

Mul-T-Lock R&D Delivers Complete Peace of Mind

Mul-T-Lock's expert R&D team has been busy perfecting a brand new locking concept that would address its customers' security requirements worldwide.

The result:

The MT5+, the 5th generation platform, with breakthrough features and the built-in experience of three decades.



MT5+ 5th Generation Locking Platform.
Patented High Security for Safety and
Peace of Mind.

PARTNER WITH A LEADER

- A member of the world leading ASSA ABLOY Group
- One of the top ten High Security locking solution companies in the world
- Over 3 decades of innovative High Security
- More than 500 patent registrations worldwide
- Serving every sector: industry, commerce, institutions, OEMs and residential
- 9 selling units, 20,000 service centers, 5 continents, almost 100 countries

FEEL FREE TO OFFER THE BEST:

▶ **PRODUCT** ▶ **SERVICE** ▶ **COMMITMENT**

www.mul-t-lock.com

With its readiness to rapidly respond to any challenge, Mul-T-Lock provides peace of mind through offering comprehensive, customized, top security cylinder and locking solutions and service worldwide.

ASSA ABLOY is the global leader in door opening solutions, dedicated to satisfying end-user needs for security, safety and convenience.

The Mul-T-Lock name and the musclemen logo, and any other name, mark or logo used by Mul-T-Lock and marked by an ® or ™ are registered/pending trademarks of Mul-T-Lock Ltd. in various countries. Mul-T-Lock reserves the right to make any product improvements or modifications without prior notice. © 2008 Mul-T-Lock Technologies Ltd. Cat. No. 83300726-A

An ASSA ABLOY Group brand

ASSA ABLOY

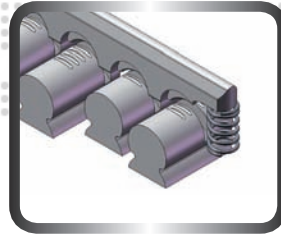


THE 5th GENERATION
OF HIGH SECURITY



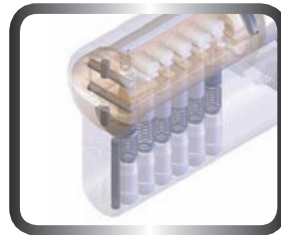
THE NEW CONCEPT 3 Locking Mechanisms for More Security

The new MT5+ features not only a double-sided flat key but also 3 active locking mechanisms:



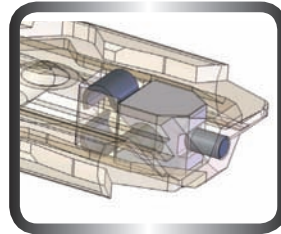
1

The locking bar mechanism is one of the three technologies featured in the MT5+. Correct alignment of the top bar pins depends upon the correct combination key being inserted into the cylinder.



2

This new-generation product is also based on a new configuration of Mul-T-Lock's well-honed telescopic pin technology.



3

Thirdly, at the tip of the key is a revolutionary mobile interacting spring - the Alpha Spring. The Alpha Spring engages a unique pin at the rear of the mechanism, creating another shearline.

THE MT5+ KEY

All MT5+ products have a double-sided unique MT5+ key. One set of cuts is for the telescopic pin mechanism and the other cut, the milled pattern, is for the locking bar. The combination provides enhanced key security and higher manipulation resistance. To maximize user friendliness, the key also features an elegant, ergonomic key head with a special silky texture.



ADVANCED KEY CONTROL

The MT5+ key secure system is supported by the unique key authorization magnetic strip card. This card must be presented to the locksmith to enable additional keys to be supplied. Only when the magnetic key card is presented to the dedicated MT5+ key duplication machine, can the required key code be configured.



MASTER KEYING CAPABILITIES

The MT5+ not only significantly upgrades security. It supports very large and complex master key systems, incorporating hierarchy and matrix requirements even within the same suite. The milled pattern can be used to create exclusive keyways in the marketplace.



THE KC5™ KEY CUTTING MACHINE

There is also a brand new key cutting machine, which yet again looks set to push the boundaries in a highly competitive marketplace.

The new, super-smart KC5 key cutting machine has electronic control and self-calibration, and uses a magnetic key card for uploading the key combination.

The machine has two add-ins. The first add-in interfaces with MASTERpiece masterkey software for automatic cutting of large series of MT5+ keys. The second is a kit that enables engraving on site.

Best of all, while featuring a new innovative operating system, the KC5 is remarkably simple to use. The KC5 can handle all Mul-T-Lock keys, and MT5+ keys can be cut using the customer's own magnetic strip security card.



- ▶ 3 locking mechanisms for more security
- ▶ Unique authorization card
- ▶ Large, complex Master Key systems
- ▶ Electronically controlled cutting machine
- ▶ Combining security and simplicity