

Legends
S E R I E S
DR200

**Clad Wood Replacement
Double Hung Windows**



Legends DR200 shown in optional oak interior with simulated divided lite and polished brass hardware.

All Trimline windows are made of the finest quality solid western pine ready for paint or stain and are also available in select hardwoods of oak, cherry and mahogany. All hardwoods used in the window are of actual solid stock not thin veneers or laminates.

efficiency

Energy-Tight Windows for comfortable living and fuel

Choice of Jamb Style

The TrimLine DR200 is constructed with a 3 1/4" jamb for a retrofit installation into the sash pocket of existing wood window frames. Virtually identical to a vinyl window installation, the DR200 is truly a replacement window.

The TrimLine DR300 is made with a 4 9/16" jamb for replacement applications requiring complete tear-outs down to a frame or masonry opening. With a snap-in nailing fin, the DR300 is ready for new construction.

Both the DR200 and DR300 can be furnished with factory applied extension jambs making it the ideal choice of window for either replacement/remodeling or new construction.

Enjoy the beauty and warmth of wood

- The insulating qualities of wood provides a positive thermal break and can be painted or stained.
- All wood parts are produced from the finest quality kiln dried select Western Pine and are treated with a water repellent preservative. Also available in Oak, Cherry, and Mahogany
- Maintenance free aluminum clad exterior is weather resistant. Does not require painting. Available in White, Bronze, Earthtone and Beige. Custom colors are also available.
- Decorative wood bead glazing provides a positive energy tight seal for the insulating glass.
- Fully weather-stripped to insure maximum comfort and low air infiltration.
- Thermally broken sill - TrimLine combines aluminum, wood and vinyl to provide an aesthetically pleasing energy efficient sill construction.
- Matching picture window - TrimLine provides a line of picture windows that matches the profiles of the DR200 and DR300 and enables you to mull window combinations with matching sight lines.
- Choice of screens - standard half or optional full screens.
- Locks are available in bright brass, white or bronze. Two dual action cam locks are used on windows over 28" wide.



Easy Tilt System

Unlike "ordinary" wood windows which employ awkward compression tilt systems, Trimline's unique recessed tilt latch and tilt/take-out design allows for easy removal for cleaning or finishing while providing aesthetic appeal. Tilt latch is available in white or beige color.



Both upper and lower sash lock in place when tilted in for safe easy cleaning or removal. Locking balance shoes and non-spread pivot bars hold the tilted sash firmly in place for safer operation. Block and tackle balances never need adjustment!

Grille Options



Aesthetically appealing removable wooden grilles in 5/8" or 7/8" widths that can be painted or stained or 5/8" maintenance free in-glass aluminum muntins or combination wood and aluminum are also available.



For achieving that authentic divided lite look, Simulated Divided lites with permanent 7/8" wooden interior grille and permanent exterior muntin are also available.



Legends Series DR200 clad replacement double hung with 3 1/4" jamb shown with applied simulated divided lite grids.



Legends Series DR300 clad double hung with 4 9/16" jamb with snap-in nailing flange for new construction.



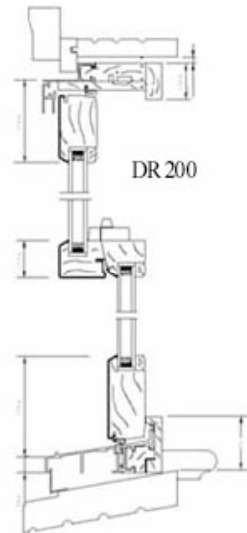
Legends Series DR300 clad 4 9/16" full jamb clad double hung available in standard sizes for new construction or custom sizes for remodeling shown in bronze clad finish.



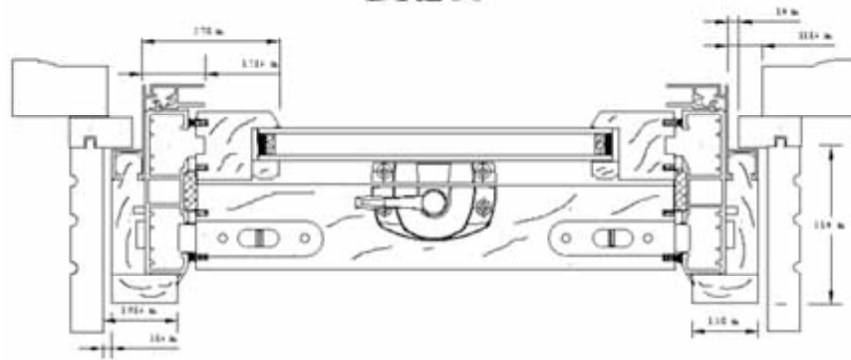
Legends Series DR200 shown with 7/8" simulated divided lite muntins in western pine, permanently applied 6/6 pattern (also available in removable style for easy cleaning)



Exterior View



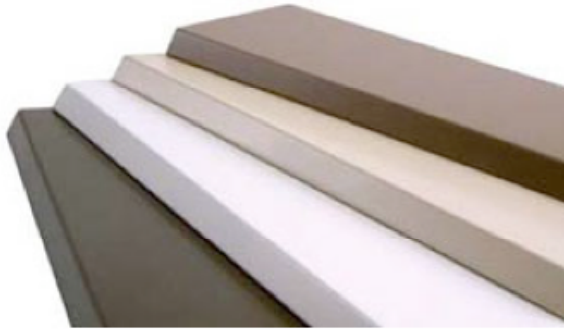
DR200



WINDOW OPTIONS:

Options Available on:

- Legends Double Hung Windows
- Liberty All Wood Windows
- Historic Wood Windows
- Ultra-Fit Sash Pac Windows



Maintenance-free exterior cladding finishes available in white, bronze, earthtone, and beige - custom colors also available.



All Trimline windows are made of the finest quality solid western pine ready for paint or stain and are also available in select hardwoods of oak, cherry and mahogany. All hardwoods used in the window are of actual solid stock not thin veneers or laminates.



Authentic true divided lite (TDL) with "putty glaze" look 1 1/8" muntin detail shown in western pine with insulating glass and warm edge super spacer glazing (exterior view).



Interior view authentic 1 1/8" True Divided Lite.



Legends, Liberty and Ultra-Fit series available with jambliner in choice of beige or white.



Tilt latch mechanism available in white or beige to match jambliner.



Your choice of locks and sash lift in matching beige, bronze, white and bright polished brass.



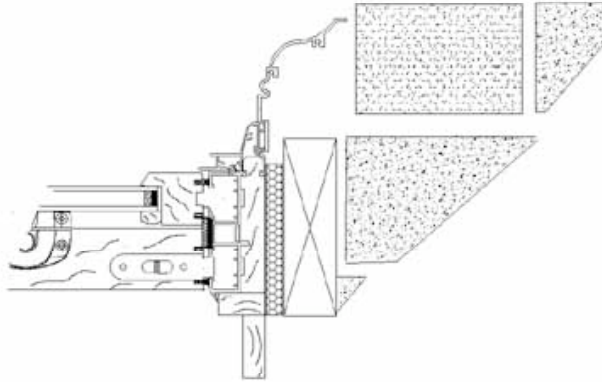
This classic "putty glaze" look is achieved with the simulated divided lite grid system available in either 7/8" (shown above) or 5/8" wide extruded aluminum applied mutins.



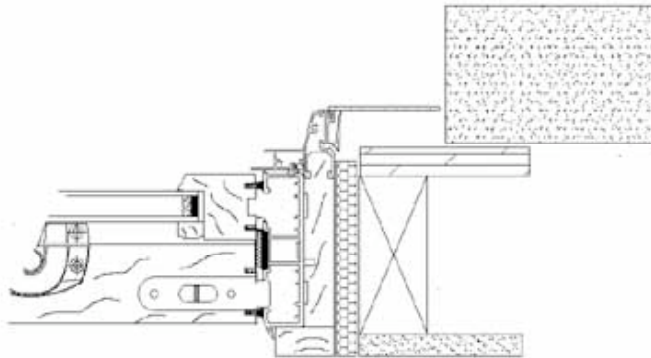
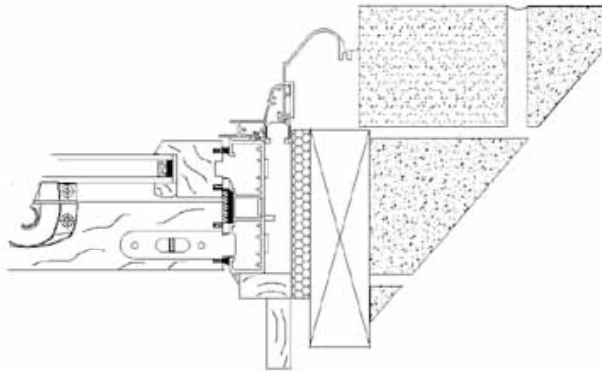
5/8" removable wooden interior grille (also available in 7/8" wide pattern).

PANNING OPTIONS:

Panning Options



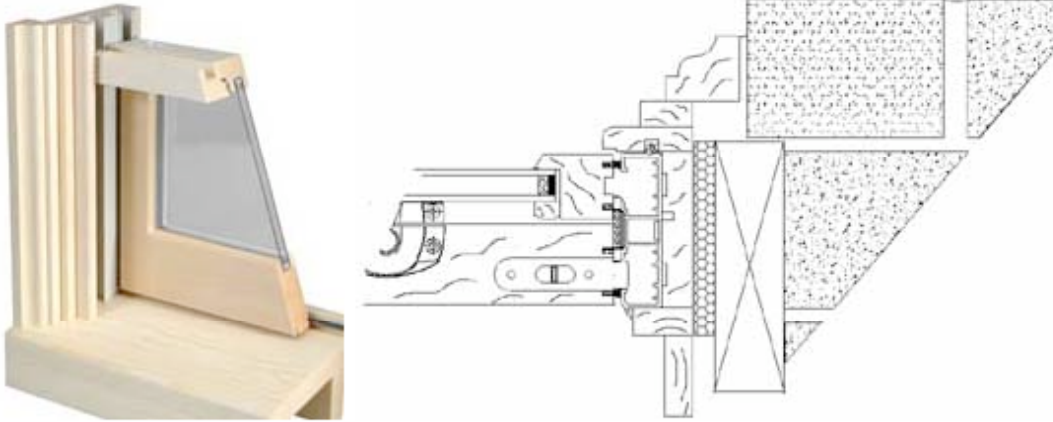
Legends Series DR300 shown in earthtone clad finish with "Colonial" style extruded aluminum panning and historic sill detail.



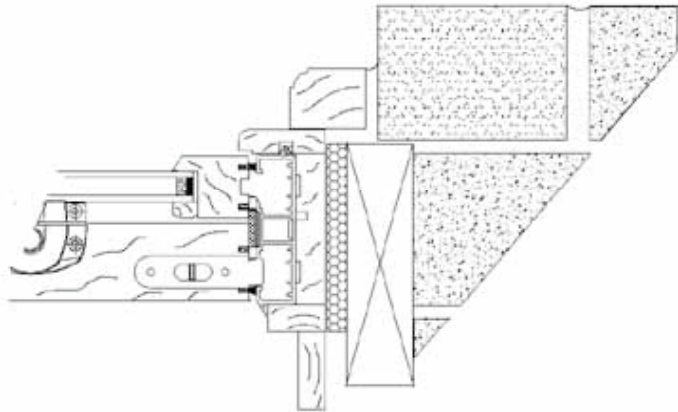
BrickMold Options:

Brick Mold Options Available on:

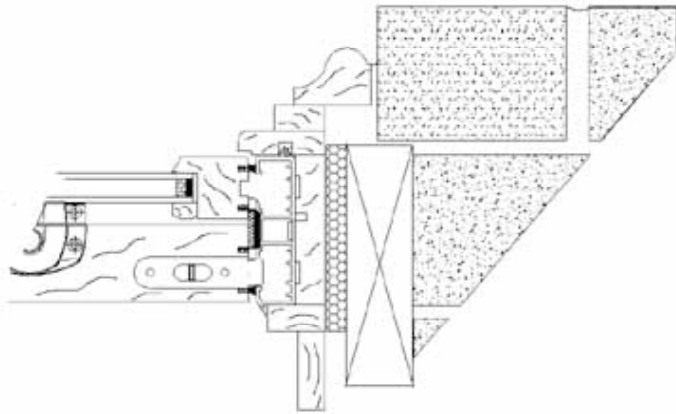
- Liberty All Wood Windows
- Historic Wood Windows



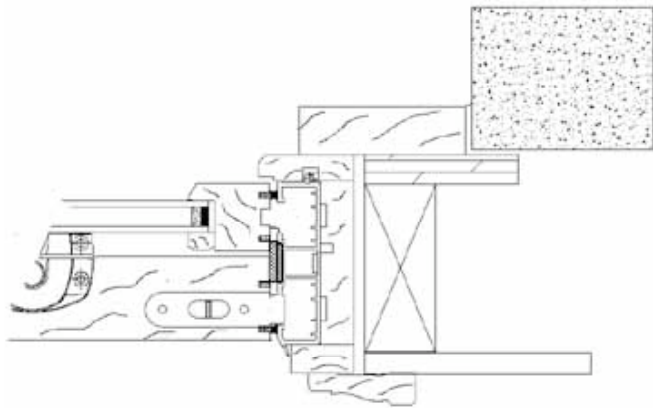
Liberty Series shown with "Jefferson" style brick molding and 2 3/4" historic sill.



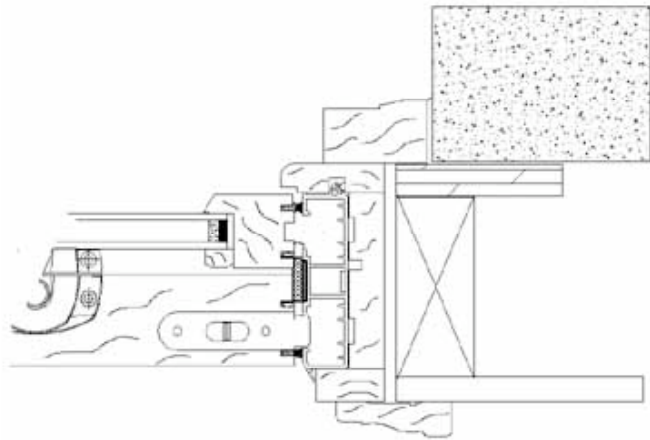
Liberty Series shown with "Fairmount" style brick molding.



Liberty Series shown with "Hartford" style brick molding.



Liberty Series show with "Lexington" style 5/4 x 3 1/2" flat exterior casing.



Liberty Series shown with "908" style 5/4 x 2 1/8" brick molding.

Liberty All Wood Windows:



Liberty Series all wood "Lexington" model with 5/4 x 3 1/2" flat exterior casing shown with authentic 1 1/8" true divided lites.



Liberty Series "Lexington" model with 1 1/8" true divided lite muntin detail.



Authentic true divided lite (TDL) with "putty glaze" look 1 1/8" muntin detail shown in western pine with insulating glass and warm edge super spacer glazing (exterior view).



Interior view authentic 1 1/8" True Divided Lite



Liberty Series all wood double hung interior view in western pine with 7/8" simulated divided lite muntin system.



Liberty series all wood double hung shown with 7/8" simulated divided lite muntin system.



The Block and Tackle balances used in all Trimline double hung windows never need adjusting and have been AAMA tested for over 28,000 cycles without failure to ensure an equivalent of 104 years worth of smooth and effortless operation.

Trimline Casement and Awning Windows:

Add Beauty and Elegance through window design

Since 1964, Trimline Windows has produced quality custom aluminum clad wood windows for replacement, remodeling and new construction.

All TrimLine windows are custom made on the 1/8" in width and height. Standard and custom jamb depths combined with custom size make TrimLine windows suitable for replacement, remodeling and new construction.



- **Corrosion Resistant Hardware** - TrimLine uses Truth Entry Guard corrosion resistant, lifetime warranted hardware on all operating casements and awnings. Coastal hardware for use in salt environments is also available.
- **7/8" Insulated Glass** - Standard insulated glass is 7/8" overall using double strength glass for better sound control, thermal performance and greater security. AFG Clear coat Low E II Krypton Gas and Super Spacer are standard for superior thermal performance and reduced condensation. Specialty glazings such as tempered, tinted and decorative glass are also available.
- **Double Weatherstripping** - combines with a tight design for a .01 cfm/ft. air infiltration rating at 25 mph rated at DP 60.



Truth E-Gard™ - lifetime warranted, corrosion resistant hardware on all operating windows.



Casement Operator - Opens window 90 degrees for easy cleaning. Dual arm and roto gear provide smooth operation.



Legends Series C4000 clad 4 9/16" full jamb casement shown in standard western pine interior available in standard sizes for use in new construction or custom sizes for remodeling.



Legends Series C3000 clad replacement casement with 3 1/4" jamb shown in optional oak interior

Custom Made Awning Windows

Specifications and Features:

Frame - All exterior parts on TrimLine Windows are manufactured from heavy, low maintenance extruded aluminum. TrimLine interior wood parts are produced from the finest quality kiln dried selected Western Pine. The insulating qualities of wood interior provide a positive thermal break and can be painted or stained to your tastes. The frame has an optional heavy duty mounting fin on all four sides.

Sash - All exterior surfaces are clad with extruded aluminum that insures long life and low maintenance. All interior parts are produced from kiln dried selected 6/4 Western White Pine stock and treated with a water repellent preservative. Sashes are glazed from the inside for easy re-glazing without replacing sash parts. All inside surfaces are natural wood, ready for stain or paint.

Glazing: All insulating glass is 7/8" thick and is silicone glazed against the extruded aluminum sash cladding creating an energy tight seal. For ease of re-glazing, removable wood stops are applied against the glass and are fastened to the interior of the sash. Glazing with Low E **SuperSpacer®** is standard. **SuperSpacer®** has the lowest thermal conductivity of any edge seal increasing the overall R-value by up to 30%.

Weatherstripping - All TrimLine Windows use a double weatherstripping system. The frame parts have a full surround tubular weatherstripping. The sash is completely surrounded by a vinyl weatherstripping. Together they seal the sash to the frame providing superior thermal performance.

Hardware - All of our operating hardware is equipped with a concealed sliding type hinge with nylon slider and stainless steel track. Our hinge design permits detachment of sash from frame without the use of tools. Our Dual-Roto gear operator has a steel arm and plated steel track. The operator and sash lock has a durable Coppertone finish. Also available in white, bronze or bright brass.

Removable Grille Inserts - TrimLine Awning and Casement sashes are available with optional removable wood grille inserts, in both Divided Lite and Diamond patterns. Inside installation allows grilles to be easily removed for cleaning and painting. In-Glass Aluminum Grilles are available in all four exterior colors for Dust-Free, No-Maintenance care.

Screens - Are made from charcoal fiberglass with attractive Coppertone colored aluminum frame that matches operating hardware. Inside installation allows screens to be removed easily. Also available in white and bronze color.

Four standard exterior colors



Maintenance-free exterior cladding finishes available in white, bronze, earthtone, and beige - custom colors also available.



All Trimline windows are made of the finest quality solid western pine ready for paint or stain and are also available in select hardwoods of oak, cherry and mahogany. All hardwoods used in the window are of actual solid stock not thin veneers or laminates.

Actual colors may vary from illustration



Trimline Bow and Bay Windows:

Add Beauty and Elegance through window design

Since 1964, Trimline Windows has produced quality custom aluminum clad wood windows for replacement, remodeling and new construction.

All TrimLine windows are custom made on the 1/8" in width and height. Standard and custom jamb depths combined with custom size make TrimLine windows suitable for replacement, remodeling and new construction.

The standard jamb depth is 4 9/16" and deeper jambs in one piece with extended sills and ears can be specified as needed to suit your building requirements.

Optional solid oak, mahogany or cherry interiors, brass hardware and decorative glass provide the exquisite look for that special room. A Cable Support System is standard and decorative knee braces are available.

All TrimLine bay and bow windows are fully assembled and ready to install in the opening.



The underside of all Bay and Bow window seatboards include as standard a pre-finished 3/4" fiberglass skinned EPS foam insulating panel.

The exteriors of all TrimLine windows use .055" thick extruded aluminum in a choice of white, bronze, earthtone or beige for extremely durable exteriors with the warmth and beauty of wood on the interiors.

Decorative leaded beveled glass options are offered in a variety of patterns and styles as are custom glass designs.

Grip-Tite™ - The Most Reliable and Trustworthy Cable Support System Designed for Bay/Bow Windows

The Grip-Tite™ cable support system provides a simple, very effective way to install projection windows. Through the use of its cleat design, not only are potential sagging problems eliminated, but the windows are easier to correctly install."



- Grip-Tite™ cleat provides no-slip feature that locks cable in place.
- Will not slip.
- Eliminates potential sagging problems.
- Greatly reduces need for field service calls.
- Simple and easy to install.
- Comes standard with all bay and bow windows.

Circle Tops/Elliptical Heads:

Custom Architectural Window Designs To Fit Your Needs

Whether your tastes are traditional or contemporary, every TrimLine Decorative Window is made to compliment your imagination and design. And, regardless of the size, shape or style, every TrimLine window is individually handcrafted from the finest materials and with energy efficiency in mind.

- Circle units are manufactured with solid jambs to any wall thickness - no extension jambs required.
- Choice of all wood or maintenance free exteriors.
- Unit size and exterior casing is manufactured to line up for use over virtually any size or style double-hung or casement window or door unit.
- Choice of exterior casing and interior trim (style, width, thickness).
- Choice of glazing using insulating glass up to 1 ¼" thick. Low E, various tinted colors, and safetyglass also available.
- Choice of removable wood grilles in virtually any pattern or authentic muntin bars.



Specifications And Features:
Circle Tops/Elliptical Heads

1. **Frame** - All parts are 6/4 kiln dried western pine which are treated with a water repellent preservative and can be painted or stained as desired to complement the individual interior design and style. The basic jamb is a full 4 9/16", however, any desired wall thickness can be accommodated without the use of extension jambs thereby leaving no unsightly seams. All Trimline circle units are manufactured with full jambs.
2. **Cladding** - The frame cladding is designed so that each TrimLine decorative window can be installed individually or mullied to other TrimLine single or multi-lite casement, awning or double hung window units. The insulating qualities of an interior wooden jamb provide a positive thermal break while being fitted to a low maintenance extruded aluminum exterior frame in a choice of four colors.
3. **Flashing** - The aluminum exterior frame is designed with a continuous flange around the entire unit perimeter forming a combination mounting fin and window flashing.
4. **Glazing** - All units are direct-set glazed with insulating glass up to 1 1/4" in overall thickness. All insulating glass is manufactured using SuperSpacer® which has the lowest thermal conductivity of any edge-seal on the market today increasing the overall R-value by up to 30%. Low E, various tinted and other specialty glass as well as tempered or safety glass is also available. All units are glazed from the inside with decorative wood stops for ease in reglazing.
5. **Interior casing** - Interior wood casing in 2 1/4" or 3 1/2" colonial or ranch styles are available in pine or solid natural oak and is ready for painting or staining.



Four Exterior Colors



Maintenance-free exterior cladding finishes available in white, bronze, earthtone, and beige - custom colors also available.



All Trimline windows are made of the finest quality solid western pine ready for paint or stain and are also available in select hardwoods of oak, cherry and mahogany. All hardware used in the window are of actual solid stock not thin veneers or laminates

Any Shape - Any Size

Circular Shapes

- Full Round
- Half Round
- Quarter Round
- Arch Top
- Gothic
- Circle Segment
- Oval

Decorative Grilles - All units are available with removable wooden grilles in virtually any decorative pattern specified.

Simulated Divided Lite Grilles - permanently applied interior and exterior grille.

In-Glass Aluminum Grilles are available in all four exterior colors for Dust-Free, No-Maintenance care for any rectangular pattern as are Simulated True Divided Lite exterior grilles.



Trimline decorative windows are also available in non-clad natural all wood exterior finish for custom painting or staining.

We Make Our Shapes To Fit Your Shapes:

Whether your tastes are traditional or contemporary, every TrimLine Decorative Window is made to compliment your imagination and design. And, regardless of the size, shape or style, every TrimLine window is individually handcrafted from the finest materials and with energy efficiency in mind.

- Trapezoidal units are manufactured with jambs made to any wall thickness.
- Choice of all wood or maintenance free clad exteriors.
- Unit size and exterior casing is manufactured to line up for use over virtually any size or style double-hung or casement window or door unit.
- Choice of exterior casing and interior trim (style, width, thickness).
- Choice of glazing using insulating glass up to 1 1/4" thick. Low E, various tinted colors, and safetyglass also available.
- Choice of removable wood grilles in virtually any pattern or authentic muntin bars.



Specifications And Features: Trapezoids, Triangle, Octagonals, Transoms

1. **Frame** - All parts are 6/4 kiln dried western pine which are treated with a water repellent preservative and can be painted or stained as desired to complement the individual interior design and style. The basic jamb is a full 4 9/16", however, any desired wall thickness can be accommodated without the use of extension jambs.
2. **Cladding** - The frame cladding is designed so that each TrimLine decorative window can be installed individually or mulled to other TrimLine single or multi-lite casement, awning or double hung window units. The insulating qualities of an interior wooden jamb provide a positive thermal break while being fitted to a low maintenance extruded aluminum exterior frame in a choice of four colors.
3. **Glazing** - All units are direct-set glazed with insulating glass up to 1 1/4" in overall thickness. All insulating glass is manufactured using SuperSpacer® which has the lowest thermal conductivity of any edge-seal on the market today increasing the overall R-value by up to 30%. Low E, various tinted and other specialty glass as well as tempered or safety glass is also available.
4. **Glazing Stop** - All units are glazed from the inside with decorative wood stops for ease in glass replacement.
5. **Nailing Fin** - The aluminum exterior frame is designed to accept a snap-in heavy gauge vinyl flange, which surrounds the entire unit perimeter serving as both an installation fin and window flashing.





Ultra-Fit sash replacement system in white shown installed in typical wood opening with 5/8" removable grille in bottom sash and 1 1/8" authentic true divided lite "Presidential" model segmented arch top sash.

Sash replacement Kits

The Ultimate Sash Replacement System

Ultra-Fit Sash Pac Sash Replacement System

TrimLine Windows offers the **Ultra-Fit Sash Pac** sash replacement window system. Unlike typical wood sash replacement window systems, which merely provide a pair of loose compression style jambliners, the Ultra-Fit design unitizes its jambliner with a low profile head and sill plate, thereby ensuring a factory controlled sash opening.

The Ultra-Fit jambliner features a flexible blind stop flap to ensure a tight fitting weatherseal, while providing a seamless transition from the old window frame.

Custom made on every 1/8", the unit, which is field assembled, is installed in a similar manner as a conventional replacement window. Once the unit is secured in the opening the jambliner can be adjusted to remove any hour-glassing or bowing-out through the use of a specialized jamb adjusting screw.

The system employs the same E-Z Tilt sash, block and tackle balance system and hardware, as well as other available options on the Legend Series clad wood [double hung](#) replacement window. In addition, all wood and arched head sash with True Divided Lites are also available with this system.



Ultra-Fit head and jambliner assembly shown in white (also available in almond).



Ultra-Fit sill and jambliner assembly.



The Ultra-Fit sash replacement system is offered as a kit ready for field assembly complete with instructions and all necessary assembly and installation hardware. Shown in almond (also available in white) with optional 4 lite SDL grille in top sash and 5/8" removable wooden grille in lower sash in western pine interior.

PARTS LIST

- A. HEAD SECTION
- B. SILL SECTION
- C. LEFT JAMBLINER ASSEMBLY
- D. RIGHT JAMBLINER ASSEMBLY
- E. TOP SASH
- F. BOTTOM SASH
- G. 12 ASSEMBLY SCREWS #7X1 PHILLIPS PANHEAD
- H. 2 SILL INSTALLATION SCREWS #7X1 PHILLIPS PANHEAD
- I. 4 #6 X 2 INSTALLATION SCREWS
- J. 2 JAMB ADJUSTING SCREWS
- K. SASH PIVOT
- L. BOTTOM SASH LIFT(S)
- M. 2 SNAP-IN JAMB ADJUSTMENT HOLE COVERS
- N. 4 SNAP-IN JAMB INSTALLATION HOLE COVERS

