

# Series 7700 Sliding Patio Door

**Mechanical PVC Frame With Welded Sash**

**WINCORE**<sup>TM</sup>  
WINDOWS & DOORS



# Series 7700 Sliding Patio Door

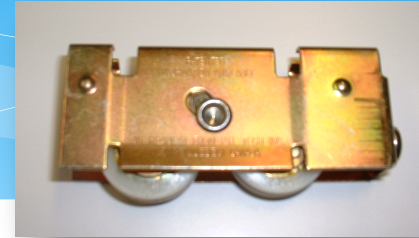
1. Outperforms all others when it comes to longevity, strength, colorfastness and weathering ability.
2. Easy and carefree operation, exceptional insulation, outstanding reliability and performance that meets the highest standards in terms of energy efficiency.
3. Adapted to customers's needs : loads of possible configurations, plus a variety of options.



# Series 7700 Sliding Patio Door

## 2. Series 7700 Unique Design Features :

- \* Patented dual-tandem nylon wheels with sealed bearings, self lubricating (longer life, noise reduction, do not wear or mark the aluminum rail)
- \* Raised rail to protect the wheels from dirt and debris
- \* All-Aluminum angle-legged tracks to ensure smooth sliding.
- \* Perfectly straight and carefully adjusted parts to minimize friction.



7700

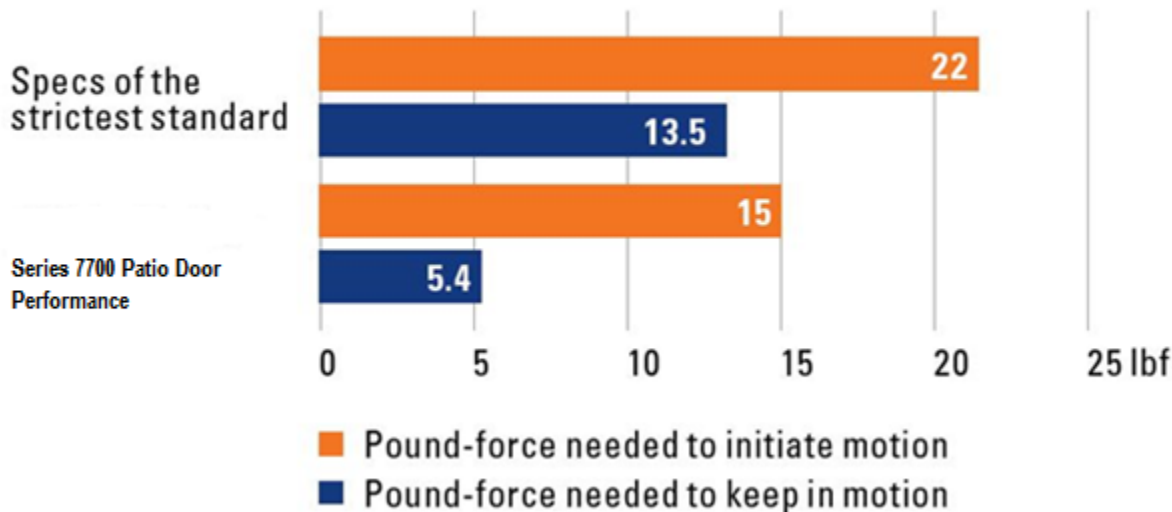


Competition

**The Easiest Door To Operate In Its Category**

# Series 7700 Sliding Patio Door

## OPERATING FORCE TEST



Series 7700 doors withstood 119,000 test cycles without failure, carrying a 165 lb. sash—the equivalent of over 30 years of constant use!

**The Easiest Door To Operate In Its Category**

# Series 7700 Sliding Patio Door

## Series 7700 Unique Design Features:

- \* Multi chamber design, with more enclosed air space than other brands.
- \* Triple weather stripping on jambs and double weather stripping at interlock, eliminate air infiltration even with deficient panel adjustment.
- \* Best combination (felt with bubble), 1st quality felt type and long life bubble type, specially located to touch the sliding rail when compressed.

**Exceptional Insulation**



# Series 7700 Sliding Patio Door

## Series 7700 Unique Design Features:

- \* Design that allows up to full 1" IG
- \* Efficient division between the glass and steel reinforcement, reducing considerably the risk of condensation.
- \* Exclusive, high performance patented water drainage system incorporated in the lower sill (low sill design facilitates circulation without sacrificing water tightness).

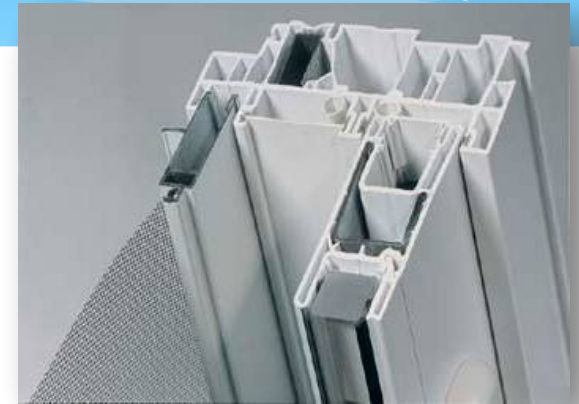


**Exceptional Insulation**

# Series 7700 Sliding Patio Door

## Series 7700 Unique Design Features:

- \* Multi-hollow chamber makes the profile more resistant to distortion caused by temperature variation, and increases strength and stability of the door.
- \* Hardware installed through a minimum of two walls
- \* Double wall on exposed section
- \* Anodized aluminum sill nosing (increases wear resistance and delivers better finished look)
- \* Galvanized steel reinforced vertical rails
- \* State-of-the-art, patented high performance weep system



**Outstanding Reliability**



# Series 7700 Sliding Patio Door

## Series 7700 Unique Design Features:

- \* Sill cover prevents dust from entering (and delivers better finished look).
- \* Fixed and mobile panels rails meet and interlock perfectly - increased protection, removal from outside is made almost impossible.



**Outstanding Reliability**



# Series 7700 Sliding Patio Door

## Multiple configurations:

- \* Two, three or four panel configurations
- \* 2 & 3 Panel Doors are Assembled, 4 Panel Doors are KD
- \* Reversible opening - The direction of opening can be changed from left to right or vice-versa simply by reversing the panels and re-snapping our exclusive wheel system.
- \* Opening configurations available: XO, OX, OXO, OOX, XO0, OXXO
- \* Multiple sizes

OX / XO		OXO		OOX / XO0		OXXO	
Unit Width	Unit Height	Unit Width	Unit Height	Unit Width	Unit Height	Unit Width	Unit Height
58 7/8"	79 1/2"	106 1/4"	79 1/2"	103 1/2"	79 1/2"	139 3/16"	79 1/2"
58 7/8"	94 1/2"	106 1/4"	94 1/2"	103 1/2"	94 1/2"	139 3/16"	94 1/2"
70 7/8"	79 1/2"						
70 7/8"	81 7/8"						
70 7/8"	94 1/2"						
94 1/2"	79 1/2"						
94 1/2"	94 1/2"						

*Non standard sizes available*

# Series 7700 Sliding Patio Door

## Series 7700 Unique Design Features:

- \* Engineered to earn the highest ratings in national classification tests.

Door	Configuration	Unit Width	Unit Height	Current DP with existing reports
5068	OX/XO	58.897	79.5	PG60
5080	OX/XO	58.897	94.488	PG35
6068	OX/XO	70.866	79.5	PG60
60610	OX/XO	70.866	81.875	PG60
6080	OX/XO	70.866	94.488	PG35
8068	OX/XO	94.488	79.5	PG35
8080	OX/XO	94.488	94.488	PG35
9068	OXO	106.243	79.5	PG45
9068	OOX/XOO	103.464	79.5	PG30
9080	OXO	106.243	94.488	PG30
9080	OOX/XOO	103.464	94.488	PG30
12068	OXXO	139.409	79.5	PG35
12080	OXXO	139.409	94.488	PG30

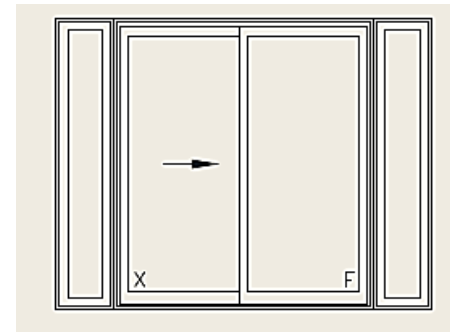
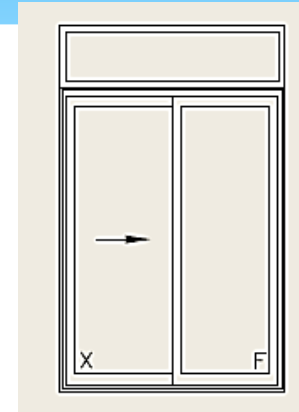
# Series 7700 Sliding Patio Door

Sidelite	Configuration	Unit Width	Unit Height	Design Pressure
2068	O	23 1/2	79 1/2	R-PG60
3068	O	35 1/2	79 1/2	R-PG60
4068	O	47 1/2	79 1/2	SD-R40
Transom	Configuration	Unit Width	Unit Height	Design Pressure
5020	O	58 7/8	23 1/4	FW-HC100
5030	O	58 7/8	35 1/4	FW-HC100
6020	O	70 7/8	23 1/4	FW-R75
6030	O	70 7/8	35 1/4	FW-R75
*Sidelite and Transom Design Pressure for non-Mulled units				

# Series 7700 Sliding Patio Door

## Multiple configurations:

- \* Sidelites and transoms available.
- \* Sidelites up to 4080
- \* 1-section transom on 5' and 6' Wide doors
- \* Performance: Mulled Configuration DP Rating  
available for Two Panel doors with  
single Transom or 1 and 2 Sidelites



# Series 7700 Sliding Patio Door

## Lead Time

### 2 Week Lead Time Items

5068/6068/8068 2 Panel Doors  
in White/Tan/Clay  
9068 3 Panel Doors in White/  
Tan/Clay

### 4 Week Lead Time

*Transoms*  
*Sidelites*  
*8' Tall Doors*  
*6'10" Tall Doors*  
*All CUSTOM*  
*All Interior Woodgrain*  
*All Exterior Paint*  
*4 Panel Doors*

# Series 7700 Decorative Options

## Standard Interior/Exterior Colors



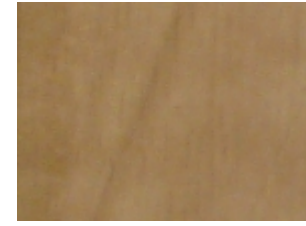
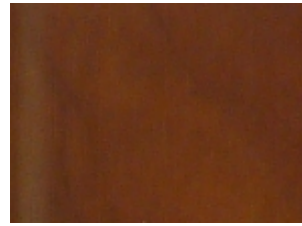
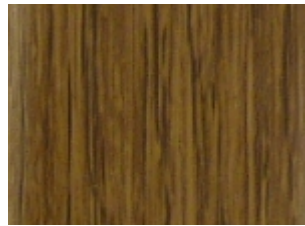
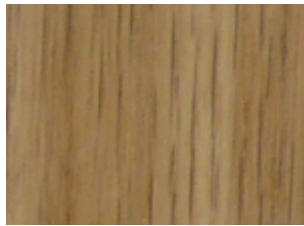
White



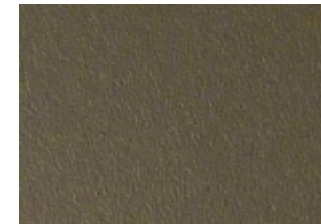
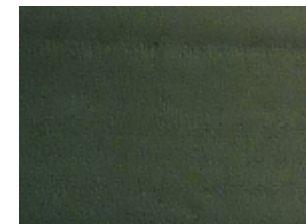
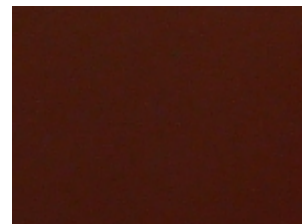
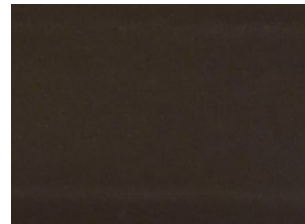
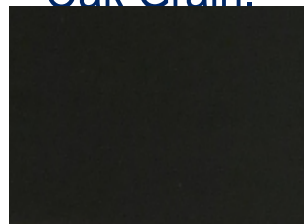
Tan



Clay



- \* Woodgrain laminates Light Oak, Dark Oak, Calvados Cherry, Calvados Maple, White Oak Grain.



- \* Exterior paint colors Bronze, Brown, Mesa Red, Hunter Green, Earthtone

# Series 7700 Decorative Options

## Standard Handles

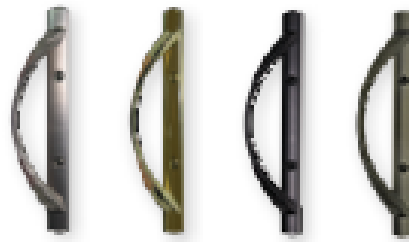


White

Tan

Clay

## Optional Plated Handles



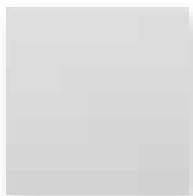
Satin  
Nickel

Brass

Bronze

Antique  
Brass

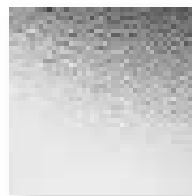
## Tinted Glass



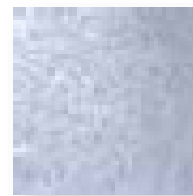
Grey



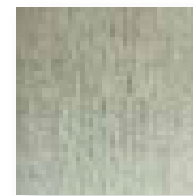
Bronze



Obscure



Glue Chip



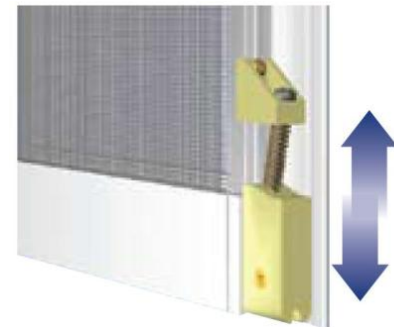
Rain



# A DOOR ADAPTED TO YOUR NEEDS

## Optional Silensia Screen in White, Tan and Clay:

- \* Rigid and easy-to-operate heavy duty extruded aluminum gliding screen with latch and keeper
- \* Exclusive, patented four independent adjustable nylon screen wheel system with independent suspension at all four corners designed with side adjustment screw for easier leveling and avoid jamming and derailing



Fully adjustable spring loaded rollers

Doors with Exterior Paint receive  
premier Silensia Screen Standard

# RELIABLE

How do we measure carefree operation?

How about by 1.3 million doors sold—and one of the lowest service rates in the industry!



Outstanding Reliability

# Blinds Between the Glass for Vinyl Sliding Patio Doors (Series 7700)

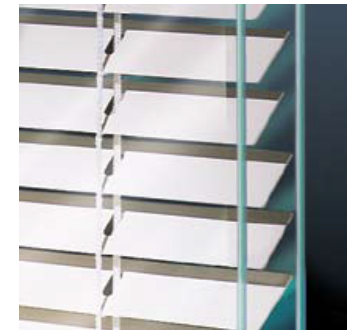


# *Sliding patio doors are a favorite of homeowners for their window to the world.*

- Control Privacy
- Control Light and UV
- Control Solar heat gain
- Convenient Easy Operation
- Tempered Glass engineered for safety
- Safety for children and pets
- No dusting
- Concealed Cords
- Reduced Allergens
- Protection from excited pets, curious toddlers and occasional basketball
- A clean, efficient look
- No need for bulky window treatments
- White blinds complement any decor



Adjustable with easy-to-use operators, the blinds can be arranged to reduce solar heat gain and fabric fading.



Blinds are sealed between tempered safety glass for longer life and better insulation.

# *Functionality and reliability are the hallmarks of blinds between glass technology.*



***Looks great:*** Conventional window treatments get in the way when operating sliding patio doors. Blinds between glass do not interfere with the sliding door function and are easy to integrate into any interior décor.

And the mechanisms required to operate the blinds are concealed for

***a clean, efficient look.***  
**World-class engineering:** Our blinds between glass products are superbly engineered for long-lasting operation.

**Warranty:** Blinds between glass are covered against manufacturing defects for a full decade. That is ten years of product confidence.

## **THE PERFECT SOLUTION**

**Control, convenience, functionality, dependability and safety...Blinds between glass are the perfect solution for your sliding patio door**

# Product Specifications

- \* Raise, Lower and Tilt

- \* White Only

- \* Available for 5068-6068-9068-12068 Doors

Custom Blinds are available; however, there are size limitations that need to be considered.

Blind Minimum Width is 22" and Minimum Height is 48". Blind Maximum Width is 36" and Maximum Height is 78". If the Blind size required falls outside these parameters, BBGs are Not available. For example, 8' wide or 8' tall doors are not available with blinds.

- \* 1" Insulating Glass

- \* Grids Unavailable

- \* Low-E Glass Surface 2 Cardinal 270

- \* *Not Energy Star Rated*

# Product Specifications

- \* Capillary Tubes Standard
- \* HB Fuller Sealant
- \* Tin Plated Intercept spacer
- \* 10 Year Full Warranty
- \* Reduced force operator — located next to jamb of passive panel and opposite handle of active panel



# Reliability

ASTM 2190

Intercept product is NFRCcertifiable

Fog Testing/Out gassing  
All components passed

Temperature Conditioning  
Shipping Simulation- Passed  
In-Field Simulation- Passed

# Reliability

## Cycle/Wear Test

Completed 10,000 cycles.

Tape Adhesion; Operator Track

## Ship Test

Packaging and product passed



# **Product Information Handling and Operation Tips**

# HANDING EXPLANATION

- \* BBGs are handed looking from the inside out. If the blind operator is on the right, it is a right hand blind, if on the left, it is a left hand blind. Since our customers order sliding patio doors from Outside Looking In, the following rules will apply...
- \* If OSLI = OX , then BBG Right Hand, Qty 2
- \* If OSLI = XO, then BBG Left Hand, Qty 2
- \* If OSLI = OXO Left Opening, then BBG Right Hand, Qty 1 AND BBG Left Hand, Qty 2
- \* If OSLI = OXO Right Opening, then BBG Right Hand, Qty 2 AND BBG Left Hand, Qty 1
- \* If OSLI = OOX, then BBG Right Hand Qty 2 AND BBG Left Hand, Qty 1
- \* If OSLI = XOO, then BBG Left Hand Qty 2 AND BBG Right Hand, Qty 1
- \* If OSLI = OXXO, the BBG Right Hand, Qty 2 AND BBG Left Hand, Qty 2

# CUSTOMIZATION

- \* Custom Blinds are available; however, there are size limitations that need to be considered. If the glass size required falls outside these parameters, BBGs are Not available.
- \* Minimum Width is 14" and Minimum Height is 48"
- \* Maximum Width is 38" and Maximum Height is 80"

(Maximum height is dependent upon the width ordered)

# How to Handle the IG Panel

- The IG for the Raise/Lower Blind must be stored in the supplied packaging or on its side (operator down) . The deflection of the glass may temporarily disrupt the service of the blind if stored flat.
- Installation should be done in the upright position to reduce the acclimation time required for the IG.

# How to Handle the IG Panel

**DO NOT ATTEMPT TO OPERATE THE BLIND  
UNTIL THE UNIT IS POSITIONED IN THE FULL  
UPRIGHT – INUSE STATE**

To perform properly, the units must be acclimated to their in-use position. Time will vary depending upon geographical location, air pressure, and temperature. Recent changes in any one of these conditions will lengthen the acclimation time.



# PATIO DOOR BLIND TIPS

- The blind will raise much easier if the slats are tilted in the full open position.
- Fully tilted closed— you will not be able to see through the blind at eye level. As with any blind, you will be able to see through the blind slats as you look down.
- Raise / lower operator or the tilt operator comes off the track – Hold the operator at a sharp angle to the glass so the two legs can be reinserted under the track opening. Re-couple the magnets.

# PATIO DOOR BLIND TIPS

- If the blinds do not fully drop on the initial try or are not level, then the units must be conditioned or exercised. Raise and lower the blind several times. Also, fully tilt the blind in both directions several times.
- A small gap may exist at the bottom at full drop and is considered normal.

# PATIO DOOR BLIND TIPS

## **Troubleshooting**

- Most problem conditions can be corrected by exercising the blind (fully cycle the blind from top to bottom then repeat if necessary).
- Blind will not fully raise or lower – Exercise the blind. Be sure the slats are in the full open position.
- Raise / Lower operator decouples – Exercise the blind. Be sure the slats are in the full open position. Operate at a medium speed.
- If decoupling continues to the point you cannot fully raise or lower the blind, an internal failure has occurred.

# PATIO DOOR BLIND TIPS

## **Troubleshooting**

- Blind levelness - In the full up position, the blind may not be level. The degree of levelness will vary each time the blind is cycled.
- Raise / lower operator or the tilt operator comes off the track Hold the operator at a sharp angle to the glass so the two legs can be reinserted under the track opening. Re-couple the magnets.

# PATIO DOOR BLIND TIPS

## Troubleshooting

- Re-coupling operator magnets-
  1. Slide the operator past the half-engagement point; you'll hear/feel one click (diagram A).
  2. Continue sliding the operator to the very top for full engagement; you'll hear/feel a second click (diagram B).

