

5400G Armor Max Plus™ Windows—
Maximum Impact Protection

Exceptional hurricane
protection, beauty, energy
efficiency, security, safety
and sound reduction.

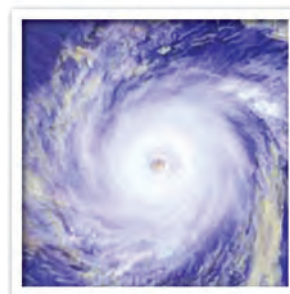


MIAMI-DADE COUNTY
APPROVED

 **Soft-Lite®**
Windows
Bringing quality to light.



America's Toughest, Prettiest and Most Versatile Hurricane Impact Windows.



For discerning homeowners who accept only the best for their homes—and need protection from violent weather—Soft-Lite offers the 5400G Armor Max Plus™ line of impact windows. As beautiful as they are strong, these Level “D” hurricane windows also provide cost-saving energy efficiency, outstanding protection against intrusion, significant sound reduction and greater safety.

Unlike other hurricane windows that are patched together from old designs, 5400G Armor Max Plus impact windows were specifically designed to give you the protection you need and the beauty and ease of use you deserve. They have been specially engineered to protect your home and loved ones from violent weather year round. Having easily passed all ASTM Large Missile Impact Level “D” tests, 5400G Armor Max Plus windows can be installed anywhere, even right on the coastline.



These rugged, heavy-duty impact windows provide “continuous” hurricane protection because they require no preparation as violent weather approaches. Just close and lock them. Unlike shutters or boarded-up windows, they allow natural daylight in, making it easier and safer for you to function during power outages.

Numerous Soft-Lite 5400G Armor Max Plus™ window models in various sizes have passed the rigorous air, water, structural and missile impact testing requirements for Miami-Dade County, Florida—which means they can be used in virtually any area that requires hurricane or impact protection.

Soft-Lite is a proud member of the International Hurricane Protection Association.



Soft-Lite, window partner with the National Crime Prevention Council, offers intruder-resistant windows.



OUR LIFETIME WARRANTY protects your investment and our reputation. It guarantees that all moving parts and the hermetically insulated seal in our windows are free from defects in materials or workmanship. It also guarantees that our vinyl colors will remain true for the life of your home. Non-prorated. Transferable. Glass-breakage warranty available.



5402G Armor Max Plus 2-Lite Slider with grids



5402G Armor Max Plus 2-Lite Slider

Features of 5400G Armor Max Plus™ Impact Windows

1. 5400G Armor Max Plus™ Hurricane Glass System—with three panes of glass and a protective 0.090" laminated interlayer—provides exceptional protection against airborne debris and other dangers from violent weather. The glass is deeply embedded into the frame, offering optimum structural integrity.*
2. Rigid tubular master frame—with all the corners fused together at high temperatures for extraordinary strength—has 13 separate chambers to improve insulating properties, as well as strength and rigidity. Comfort-Foam™ inside the frame chambers enhances thermal performance.
3. Heavy-duty constant force balance system—with stainless steel reinforced attachment points—gives you fingertip operation of even the largest double-hung models.*
4. Two heavy-duty cam sweep locks hold sashes in place during violent weather and will also keep your home safer and more secure. From the outside looking in, they cannot be seen, which gives your windows a more attractive appearance.
5. Soft-White™ and Beige vinyl—clear through—complement practically any architectural style.
6. Zamac 3 zinc-aluminum tilt latches on double-hung models help keep sashes secure during violent weather, yet let you tilt in sashes easily to make cleaning a breeze. (Designed specifically for coastal conditions.)
7. Soft-Lite's high-performance SolarControl Max Low-E coating and argon gas between the glass panes ensure that 5400G Armor Max Plus impact windows help lower home energy costs and make your home more comfortable.*
8. Heavy-duty aluminum screen frames feature GREENGUARD® certified BetterVue™ screens that give you a clearer view of the outdoors and added airflow.*
9. Automotive-type window glazing creates a super-tight seal.*
10. Insulating foam wrap around the frame significantly reduces the possibility of drafts.
11. PPG Intercept® warm-edge spacer system reduces energy loss through the glass.*

** Feature not visible in photograph.*



Distinguish Your Home by Selecting Unique Soft-Lite Options

In designing 5400G Armor Max Plus products, Soft-Lite engineers were challenged to design windows that are as beautiful as they are strong. These windows feature a distinctive profile that's accentuated by elegant dual millwork lines. You can even customize them to your liking by selecting from a number of design options—such as contoured internal grids and color vinyl finishes. Soft-Lite offers you numerous possibilities for creating a beautiful and truly unique look for your home.

COLOR OPTIONS

A palette of beautiful colors allows you to coordinate or contrast your windows to your home—giving your home an all-new ambiance, inside and out. Choose from Soft-White™ or Beige vinyl—and from an unlimited array of exterior color options.

INTERNAL GRIDS

Finely detailed contoured internal grids give windows the look of divided lites—yet allow for easy window cleaning because they're encapsulated between the glass panes.



WINDOW STYLES AND CONFIGURATIONS

5400G Armor Max Plus hurricane series is available in several styles, including 5405G double-hung, 5402G horizontally sliding windows and 5401G picture window models.



MIAMI-DADE COUNTY BUILDING CODE

Several specially engineered Soft-Lite 5400G AMP products comply with the Miami-Dade County Building Code.



INTERIOR/EXTERIOR VINYL COLORS



SURE-COAT™ EXTERIOR PVC BOND COLORS

Coastal Dune 08	Champagne 10	Sandstone 37	Wedgewood Blue 93	Terratone 53	Forest Green 78	Bronze 21
Almond 20	Colonial Ivory 32	Gray 39	Sierra 83	Rosewood 57	Royal Brown 24	Black 09

Custom colors are available by special request.

Note: Soft-Lite matches or coordinates hardware, grids and weather stripping to the product color as best as possible. Please ask your window professional if you have questions pertaining to colors.

Actual color samples vary from colors printed here, please see your Soft-Lite Dealer for more precise color representation. All exterior colors should be viewed in outside daylight.



PROTECTION AND PEACE OF MIND



5400G Armor Max Plus™ impact windows provide fortress-like protection against intrusion. A nearly impenetrable 0.090" PVB interlayer, three panes of glass that are deeply embedded into the frames, rigid tubular master frames and superior locking hardware combine to do what alarm systems can't—keep bad guys from getting into your home.

PEACE AND QUIET

You'll appreciate the sound-reducing qualities that 5400G Armor Max Plus impact windows provide. Their specially engineered heavy-duty glass system creates a formidable barrier to outside noise. These products provide you with a level of peace and quiet you've never experienced before.

COMFORT AND ENERGY SAVINGS

Like all Soft-Lite products, 5400G Armor Max Plus impact windows are engineered for optimal thermal performance. Because they are so highly energy efficient, they help to lower your energy bills and keep temperatures constant throughout your home so that you can enjoy a more comfortable living environment.



ULTRAVIOLET PROTECTION

UV rays and other segments of the light spectrum cause fading and damage to carpeting and home furnishings. Nothing can completely prevent fading, but Soft-Lite 5400G Armor Max Plus windows have a remarkably high Fade Protection Factor (FPF) of 50. Like Sun Protection Factor (SPF) for sunscreens, FPF is a rating achieved through independent laboratory testing. A higher FPF number means greater fade protection because virtually all of the UVA and UVB rays are being blocked by the glass and coatings.

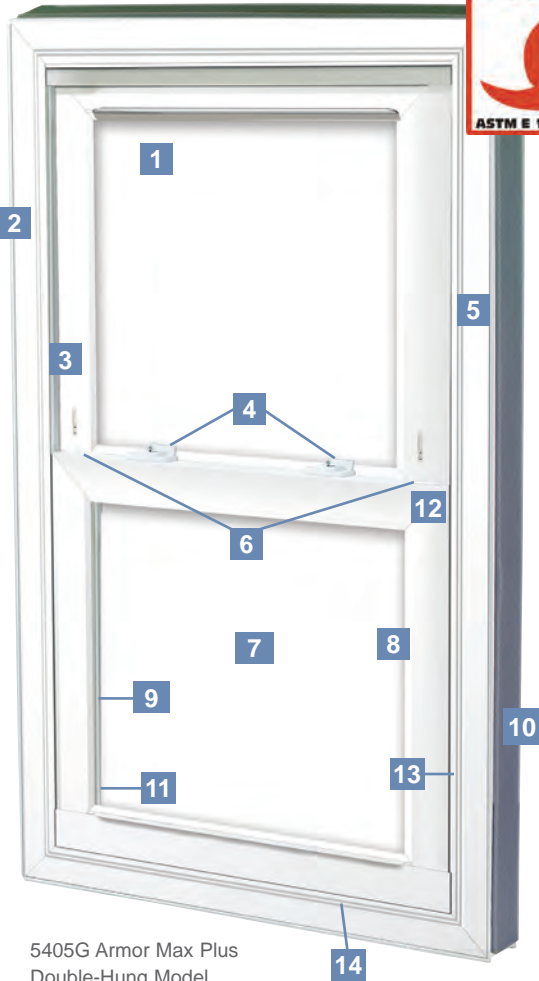
SAFE AT HOME

5400G Armor Max Plus impact windows give new meaning to "safety glass." Normal tempered safety glass breaks into small pieces when even accidentally struck with a sharp or large object. The glass in 5400G Armor Max Plus windows is so resilient that objects typically bounce off of it. When struck with a sharp object, the glass may crack, but it stays intact to continually protect your home.



MIAMI-DADE COUNTY
APPROVED

*SELECT MODELS



5405G Armor Max Plus
Double-Hung Model

OTHER HURRICANE PRODUCTS FROM SOFT-LITE

5300G Armor Impact Plus™
(AIP) hurricane impact
replacement windows have
passed ASTM E 1886-04/1996-
04 tests to provide Level "C"
protection—up to 130 miles
per hour.



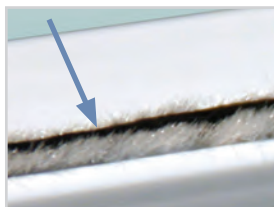
Soft-Lite's 6400G Series
sliding patio doors are DP-50
rated and are also tested
and approved for Large
Missile Impact.



12. Special structural
reinforcement enhances the
strength and protective
properties of these windows.



13. Special double weather
stripping seals out drafts and
dust and improves insulation
and window performance.



14. Distinctive dual millwork
lines on the interior master
frame provide a look of
handcrafted molding.

